

HALCO
Rock Tools

RC550

HALCO
Rock Tools

HALCO **EXPLORATION**

RC Hammers and Bits

RC 440 Hammers

RC 550 Hammers

XHF RC 440 Bits

XHF RC 550 Bits



HALCO
Rock Tools

YOUR DRILLING EXPERT

At Halco we pride ourselves on providing exemplary levels of customer service, support and training no matter what your drilling requirements are.

Having manufactured drilling consumables for over seventy years, our support team are well placed to provide accurate and timely solutions to optimise your drilling performance.

Halco is a world class manufacturer of Down The Hole (DTH) drilling equipment with manufacturing locations in The United Kingdom and Australia. Our headquarters are in the North of England, where Halco pioneered the development and distribution of DTH hammers and bits in the 1950's.

Produced for more than seventy years, our products continue to be regarded as some of the most reliable and durable available today. This is due to our commitment to meet our customers needs, design expertise, and rigorous product testing in extreme drilling conditions.

We offer a wide range of specialist products necessary for the rigours of every drilling application.

- Mining
- Quarrying
- Oil and Gas
- Exploration
- Waterwell
- Geotechnical/Civil Engineering

Our team of specialists, together our dedicated distributor network are available to help you select the optimal product for your drilling application and equipment.

To find you nearest Halco distributor contact our sales teams at one of our sales locations shown on the back cover of this document.

Who We Are?

Halco designs and manufactures to exacting standards, Halco DTH hammers deliver outstanding performance, productivity and longevity.

Customers also enjoy the versatility and variety, allowing the use of Halco DTH hammers on a wide range of rock-drilling applications. Our drill bits have superb performance and long life which make Halco DTH drill bits a world leader.

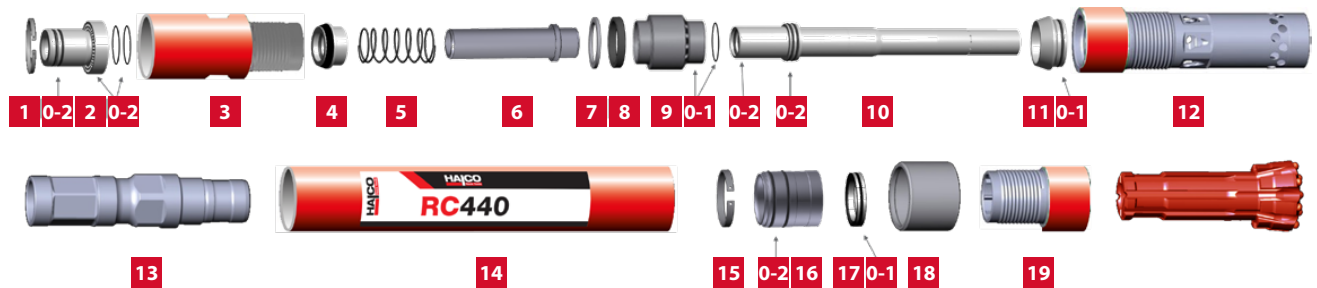
Introducing the new RC440 & RC550 series

Developed for the Exploration market, our 4" and 5" models include a unique bit retention system for reduced downtime in the event of bit shanking. With an integrated hammer and bit design for improved chip removal and extended bit life, plus increased production rates on our previous models, Exploration drillers can now expect to reach greater depths with improved sample cuttings for longer.



RC HAMMERS

RC440 4" REMET



600800 RC440 4" REMET HAMMER ASSEMBLY

1	1000895	Circlip Internal
2	1107035	Adaptor Air Screen 4" Remet
3	1107041	Top Sub 4" Remet
4	1046940	Check Valve
5	9001056	Check Valve Spring
6	1043770	Adaptor Tube
7	1046943	Steel Make Up Ring
8	1046942	Make Up Ring
9	1066177	Distributor
10	1046945	Sample Tube Venturi
11	1107120	Sample Tube Mount
12	1046946	Inner Cylinder 104.9mm A/F
13	1046947	Piston
14	1046948	Wear Sleeve
15	1061501	Piston Retaining Ring
16	1046950	Guide Bush
17	1046951	Bit Retaining Ring
18	1046958	Chuck Sleeve 5 3/16"
19	1043771	Chuck
O-1		O Ring Location - Quantity

Hammer Specifications

Bit Shank	DR44
Bit Range	5" - 127mm to 5 1/2" - 140mm
Top Sub Thread	4" Remet
Spanner Flat	3.7" - 94mm A/F x 1.96" - 50mm
Overall Length S/S	47.9" - 1216mm
Weight (less bit)	154lbs. - 70kg
Wear Sleeve O.D.	4.76" - 121mm
Oil Consumption	2 - 3 litres per hour

Air Pressure

Air Consumption

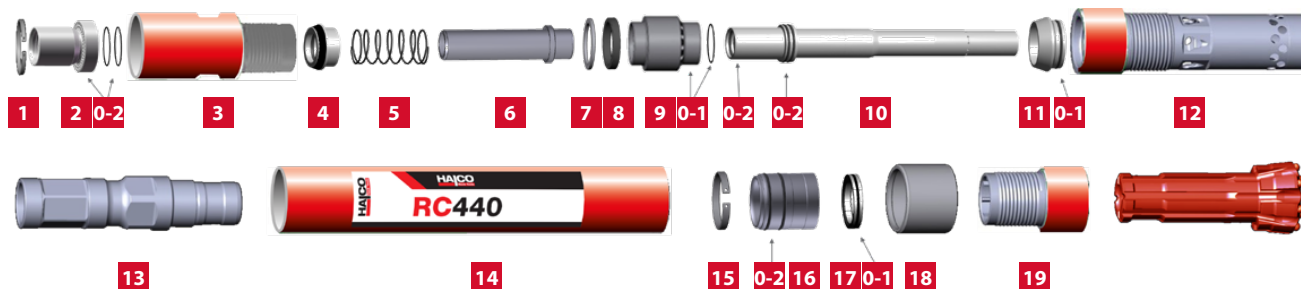
PSI	bar	CFM	m ³ /min
250	17.2	504	13.6
300	20.7	614	16.6
350	24.1	708	19.1
400	27.5	808	21.8
450	31	903	24.2
500	34.5	987	26.6

Spare Parts

1071679	O Ring Kit – Contains O Rings for items 2, 9, 10, 11, 16, 17
1059550	Make Up Kit – Contains O Ring Kit plus inner seal for 4 and item 8
1046944	Sample Tube Standard

RC HAMMERS

RC440 4" METZKE



600801 RC440 4" METZKE HAMMER ASSEMBLY

1	1000895	Circlip Internal
2	1107037	Adaptor Air Screen 4" Metzke
3	1107040	Top Sub 4" Metzke
4	1046940	Check Valve
5	9001056	Check Valve Spring
6	1043770	Adaptor Tube
7	1046943	Steel Make Up Ring
8	1046942	Make Up Ring
9	1066177	Distributor
10	1046944	Sample Tube
11	1107120	Sample Tube Mount
12	1107122	Inner Cylinder
13	1046947	Piston
14	1046948	Wear Sleeve
15	1061501	Piston Retaining Ring
16	1046950	Guide Bush
17	1046951	Bit Retaining Ring
18	1046958	Chuck Sleeve 5 3/16"
19	1043771	Chuck
O-1	O Ring Location - Quantity	

Hammer Specifications

Bit Shank	DR44
Bit Range	5" - 127mm to 5 1/2" - 140mm
Top Sub Thread	4" Metzke
Spanner Flat	3.7" - 94mm A/F x 1.96" - 50mm
Overall Length S/S	47.9" - 1216mm
Weight (less bit)	154lbs. - 70kg
Wear Sleeve O.D.	4.76" - 121mm
Oil Consumption	2 - 3 litres per hour

Air Pressure

Air Consumption

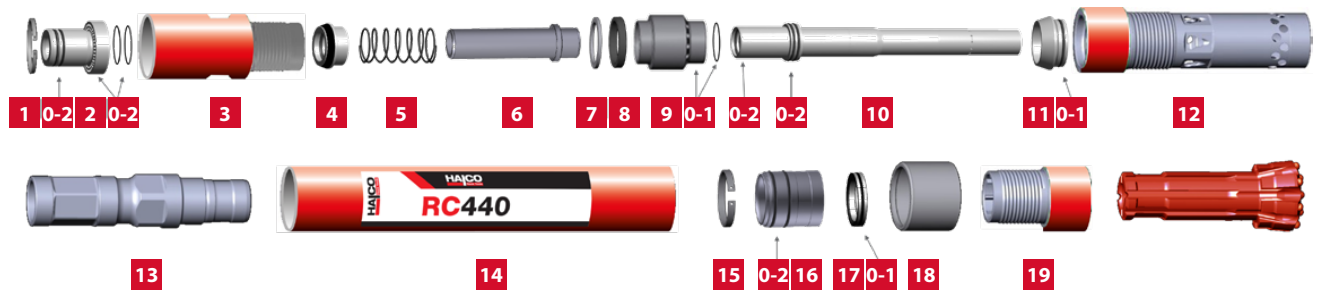
PSI	bar	CFM	m ³ /min
250	17.2	504	13.6
300	20.7	614	16.6
350	24.1	708	19.1
400	27.5	808	21.8
450	31	903	24.2
500	34.5	987	26.6

Spare Parts

1071679	O Ring Kit – Contains O Rings for items 2, 9, 10, 11, 16, 17
1059550	Make Up Kit – Contains O Ring Kit plus inner seal for 4 and item 8
1046945	Sample Tube Venturi

RC HAMMERS

RC440 4 1/2" REMET



600802 RC440 4 1/2" REMET HAMMER ASSEMBLY

1	1000896	Circlip Internal
2	1084159	Adaptor Air Screen 4 1/2" Remet
3	1046939	Top Sub 4 1/2" Remet
4	1046940	Check Valve
5	9001056	Check Valve Spring
6	1043770	Adaptor Tube
7	1046943	Steel Make Up Ring
8	1046942	Make Up Ring
9	1066177	Distributor
10	1046945	Sample Tube Venturi
11	1107120	Sample Tube Mount
12	1046946	Inner Cylinder 104.9mm A/F
13	1046947	Piston
14	1046948	Wear Sleeve
15	1061501	Piston Retaining Ring
16	1046950	Guide Bush
17	1046951	Bit Retaining Ring
18	1046958	Chuck Sleeve 5 3/16"
19	1043771	Chuck
O-1		O Ring Location - Quantity

Hammer Specifications

Bit Shank	DR44
Bit Range	5" - 127mm to 5 1/2" - 140mm
Top Sub Thread	4 1/2" Remet
Spanner Flat	3.7" - 94mm A/F x 1.96" - 50mm
Overall Length S/S	47.9" - 1216mm
Weight (less bit)	154lbs. - 70kg
Wear Sleeve O.D.	4.76" - 121mm
Oil Consumption	2 - 3 litres per hour

Air Pressure

Air Consumption

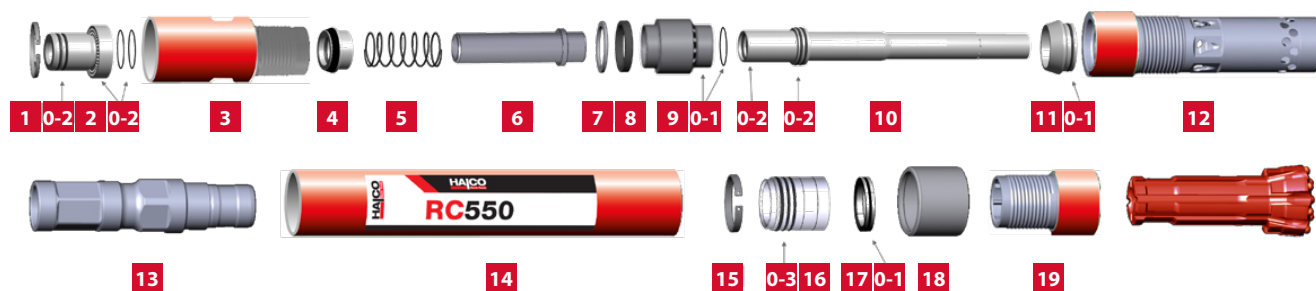
PSI	bar	CFM	m³/min
250	17.2	504	13.6
300	20.7	614	16.6
350	24.1	708	19.1
400	27.5	808	21.8
450	31	903	24.2
500	34.5	987	26.6

Spare Parts

1071679	O Ring Kit – Contains O Rings for items 2, 9, 10, 11, 16, 17
1059550	Make Up Kit – Contains O Ring Kit plus inner seal for 4 and item 8
1046944	Sample Tube Standard

RC HAMMERS

RC550 4 1/2" REMET RETENTION



600803 RC550 4 1/2" REMET RETENTION HAMMER ASSY

1	1000897	Circlip Internal
2	1048119	Adaptor Air Screen 4 1/2" Remet
3	1048188	Top Sub 4 1/2" Remet
4	1048189	Check Valve
5	9001055	Check Valve Spring
6	1048192	Adaptor Tube
7	1009562	Steel Make Up Ring
8	1010627	Make Up Ring
9	1048194	Distributor
10	1048195	Sample Tube Venturi
11	1048196	Sample Tube Mount
12	1048197	Inner Cylinder
13	1107238	Piston
14	1248977	Wear Sleeve
15	1044582	Piston Retaining Ring
16	1009572	Guide Bush
17	1009573	Bit Retaining Ring
18	1051761	Chuck Sleeve 5 7/16" Retention
19	1046868	Chuck Retention
O-1		O Ring Location - Quantity

Hammer Specifications

Bit Shank	DR55
Bit Range	5 3/8" - 137mm to 5 3/4" - 146mm
Top Sub Thread	4 1/2" Remet
Spanner Flat	4.09" - 104mm A/F x 1.96" - 50mm
Overall Length S/S	51" - 1294mm
Weight (less bit)	179 lbs - 81kg
Wear Sleeve O.D.	5.1" - 130mm
Oil Consumption	2 - 3 litres per hour

Air Pressure

Air Consumption

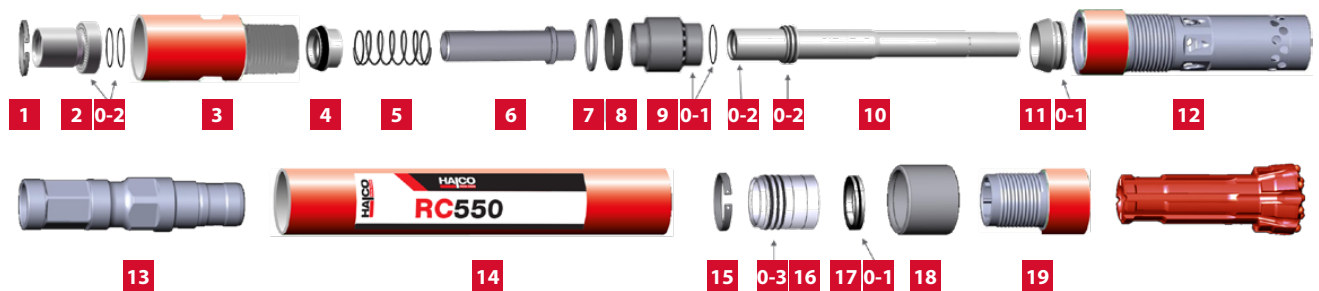
PSI	bar	CFM	m ³ /min
250	17.2	577	16.3
350	24.1	787	22.3
450	31	971	27.5
550	37.9	1156	32.7
650	44.8	1445	40.9
750	51.7	1806	51.1

Spare Parts

1048201	O Ring Kit – Contains O Rings for items 2, 9, 10, 11, 16, 17
1048200	Make Up Kit – Contains O Ring Kit plus inner seal for 4 and item 8
1113851	Sample Tube Standard

RC HAMMERS

RC550 4 1/2" METZKE RETENTION



600804 RC550 4 1/2" METZKE RETENTION ASSEMBLY

1	1107229	Circlip Internal
2	1059984	Adaptor Air Screen 4 1/2" Metzke
3	1107234	Top Sub 4 1/2" Metzke
4	1048189	Check Valve
5	9001055	Check Valve Spring
6	1048192	Adaptor Tube
7	1009562	Steel Make Up Ring
8	1010627	Make Up Ring
9	1048194	Distributor
10	1048195	Sample Tube Venturi
11	1048196	Sample Tube Mount
12	1048197	Inner Cylinder
13	1107238	Piston
14	1248977	Wear Sleeve
15	1044582	Piston Retaining Ring
16	1009572	Guide Bush
17	1009573	Bit Retaining Ring
18	1051761	Chuck Sleeve 5 7/16" Retention
19	1046868	Chuck Retention
O-1	O Ring Location - Quantity	

Hammer Specifications

Bit Shank	DR55
Bit Range	5 3/8" - 137mm to 5 3/4" - 146mm
Top Sub Thread	4 1/2" Metzke
Spanner Flat	4.09" - 104mm A/F x 1.96" - 50mm
Overall Length S/S	51" - 1294mm
Weight (less bit)	179 lbs - 81kg
Wear Sleeve O.D.	5.1" - 130mm
Oil Consumption	2 - 3 litres per hour

Air Pressure

Air Consumption

PSI	bar	CFM	m ³ /min
250	17.2	577	16.3
350	24.1	787	22.3
450	31	971	27.5
550	37.9	1156	32.7
650	44.8	1445	40.9
750	51.7	1806	51.1

Spare Parts

1048201	O Ring Kit – Contains O Rings for items 2, 9, 10, 11, 16, 17
1048200	Make Up Kit – Contains O Ring Kit plus inner seal for 4 and item 8
1113851	Sample Tube Standard

Notes

[illegible]

RC BITS

XHF RC440



HEAD DIAMETER (mm)	130.2	133.4	136.5
HEAD DIAMETER (inch)	5 1/8	5 1/4	5 3/8
FACE DESIGN	XHF	XHF	XHF
ITEM CODE	1194335	1280594	1280616
RETENTION	NO	NO	NO
NUMBER OF PORTS	2	2	2
WEIGHT (kg)	14.7	14.4	15.3
BUTTON PROFILE	DM	DM	DM
GAUGE ANGLE (°)	35	35	35
GAUGE CARBIDE QTY.	8	8	8
GAUGE CARBIDE DIA. (mm)	15.9	15.9	15.9
GAUGE CARBIDE DIA. (inch)	5/8	5/8	5/8
GAUGE CARBIDE GRADE	G30	G30	G30
FACE CARBIDE QTY.	6	6	6
FACE CARBIDE DIA. (mm)	15.9	15.9	15.9
FACE CARBIDE DIA. (inch)	5/8	5/8	5/8
FACE CARBIDE GRADE	G30	G30	G30
CENTER CARBIDE QTY.	3	4	3
CENTER CARBIDE DIA. (mm)	14.3	14.3	14.3
CENTER CARBIDE DIA. (inch)	9/16	9/16	9/16
CENTER CARBIDE GRADE	G20	G20	G20

CHUCK SLEEVE SIZING**

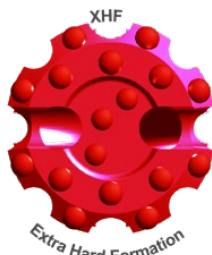
BIT DIAMETER (mm)	BIT DIAMETER (inch)	CHUCK SLEEVE PART #	CHUCK SLEEVE DIA. (mm)	CHUCK SLEEVE DIA. (inch)
130.2	5 1/8	1046956	128.6	5 1/16
133.4	5 1/4	1046958	131.8	5 3/16
136.5	5 3/8	1046959	134.9	5 5/16

* For hole collaring only

** Recommended Chuck Sleeve size is 1/16" smaller than nominated bit size.

RC BITS

XHF RC550



HEAD DIAMETER (mm)	136.5	139.7	142.9	146.0
HEAD DIAMETER (inch)	5 3/8	5 1/2	5 5/8	5 3/4
FACE DESIGN	XHF	XHF	XHF	XHF
ITEM CODE	1280622	1280604	1280603	1280605
NUMBER OF PORTS	2	2	2	2
WEIGHT (kg)	17.5	18.6	18.8	18.9
BUTTON PROFILE	DM	DM	DM	DM
GAUGE ANGLE (°)	35	35	35	35
GAUGE CARBIDE QTY.	8	8	8	8
GAUGE CARBIDE DIA. (mm)	15.9	15.9	15.9	15.9
GAUGE CARBIDE DIA. (inch)	5/8	5/8	5/8	5/8
GAUGE CARBIDE GRADE	G30	G30	G30	G30
FACE CARBIDE QTY.	6	6	6	6
FACE CARBIDE DIA. (mm)	15.9	15.9	15.9	15.9
FACE CARBIDE DIA. (inch)	5/8	5/8	5/8	5/8
FACE CARBIDE GRADE	G30	G30	G30	G30
CENTER CARBIDE QTY.	3	3	3	3
CENTER CARBIDE DIA. (mm)	14.3	14.3	14.3	14.3
CENTER CARBIDE DIA. (inch)	9/16	9/16	9/16	9/16
CENTER CARBIDE GRADE	G20	G20	G20	G20

CHUCK SLEEVE SIZING**

BIT DIAMETER (mm)	BIT DIAMETER (inch)	CHUCK SLEEVE PART #	CHUCK SLEEVE DIA. (mm)	CHUCK SLEEVE DIA. (inch)
136.5	5 3/8	1051291	134.9	5 5/16
139.7	5 1/2	1051761	138.1	5 7/16
142.9	5 5/8	1051764	141.3	5 9/16
146.0	5 3/4	1051767	144.5	5 11/16

*

For hole collaring only

**

Recommended Chuck Sleeve size is 1/16" smaller than nominated bit size.



YOUR DRILLING EXPERT

HALCO

Birds Royd Industrial Estate, Birds Royd Lane,
Brighouse, HD6 1LQ, United Kingdom

Tel: +44 1422 399900

Email: salesuk@halco.uk • www.halco.uk



Halco reserves all rights to any changes in the products
and the specifications without prior notice.

Printed: November 2020

Copyright © 2020 by Halco